

Since its establishment in 2014, Shenzhen Improve Battery Co., Ltd has been dedicated to the research, development, production, and export of LiFePO4 batteries. We have established multiple modern production lines capable of manufacturing Residential LV Batteries, Residential HV Batteries, Low-Speed Vehicle Batteries, and Lead-Acid Replacement Batteries. Our products are widely used in residential energy storage, Rvs energy storage, low-speed vehicles, and other fields, with customers spanning over 50 countries and regions worldwide. We have earned high praise and trust from our clients.

Any needs about Lithium battery?
Please visit www.improvecn.com/contact and fill out the form below.



We will give you

- Email Technical Manual
- Make a quotation
- Book a business meeting
- Book a Factory Tour

Shenzhen Improve Battery Co.,Ltd

Head Office Addr: 2F Rongcheng Industrial Park, Yayuan Road,Longgang District, Shenzhen City, Guangdong, China.

Factory Addr: Building 3, Rome Fuyuan Street No.8, Qingxi Town, Dongguan City, Guangdong, China.

Email: sales@improvecn.com

Web: www.improvecn.com

Tel: +86 177 2796 1215

LIFEPO4 BATTERY

FOR GOLF CARTS / TOUR BUS / UTVS



Shenzhen Improve Battery Co.,Ltd.
Dongguan Improve Battery Co.,Ltd.

IMPROVE BATTERY

Shenzhen IMPROVE BATTERY Co., Ltd. was established in 2014 and is located in Shenzhen. The company specializes in the research, development, production, and export of LiFePO4 lithium batteries. Its products are widely used in energy storage, golf carts, and other fields, and it collaborates with several well-known golf cart manufacturers. The company operates a factory in Dongguan with a monthly production capacity of over 15,000 batteries and has strong OEM/ODM project capabilities.

IMPROVE is committed to the development of green energy, providing safe and reliable new energy solutions, with the goal of becoming a global leader in the lithium battery industry.

1200+ Global Customers

5500m² Factory Area

30+ Golf Cart battery ranges

130+ Customized Model



Quality Control Certificates

IMPROVE has obtained a number of third-party authoritative qualification certifications according to the qualification.

- ISO 9001:2015 (Quality Management System)
- ISO 14001:2015 (Environmental Management System)
- ISO 45001:2018 (Occupational Health and Safety Management System)



Product Certifications

- CE EN 61000-6-1 ENIEC 61000-6-3
- PS E J55032(H29)
- FCC FCC Part 15 B, ANSI C63.4:2014
- RoHS RoHS 2.0 Directive (EU) 2015/863 & (EU)2017/2102
- TRANSPORT UN38.3 MSDS
- UL CELL UL Certified

Providing absolute guarantee for product quality and import and export.

Why choose IMPROVE Battery for Golf Cart?

The Right choice



IMPROVE Lithium batteries are drop-in solutions
Outlasts equivalent lead-acid batteries
Top quality standards and proven results in many applications



Performance

Single battery operation
Little or no voltage drop
Fast travel speed at all levels of discharge



Safety and Sustainability

No acid fumes or spills
Reduce use of electricity
Less waste
99% recyclable



Support customization

IMPROVE offers standard and customizable power solutions
Tailored to meet specific requirements
Compatible with a wide range of leading golf carts

LiFePO4 Battery VS Lead-Acid Battery

LiFePO4 Battery

Lead-Acid Battery



Annual maintenance	Battery cost	Maintenance	Electricity waste	Installation	Shipping
11	⌚ ⌚	- ⌚	- ⌚	⌚ ⌚	⌚ ⌚
22	- ⌚	- ⌚	- ⌚	- ⌚	- ⌚
33	- ⌚	- ⌚	- ⌚	- ⌚	- ⌚
44	- ⌚	- ⌚	- ⌚	- ⌚	- ⌚
55	- ⌚	- ⌚	- ⌚	- ⌚	- ⌚

⌚ IMPROVE LiFePO4 Battery ⌚ Lead-Acid Battery



36V SERIES

Choose the Best LiFePO4 Battery for 2 / 2+2 Seats Golf Carts

Meet the IMPROVE 36V Series batteries that upgrade your golfing journey, providing the hassle-free experience they increasingly demand: longer lifespan, extended range, freedom from daily maintenance, and a guaranteed lifespan of 10 years.

ZERO
Maintenance

FAST
Charge

6000⁺
Cycle Life

HIGH
Discharge Current

BLUETOOTH
5.0

EXTENDED
Range

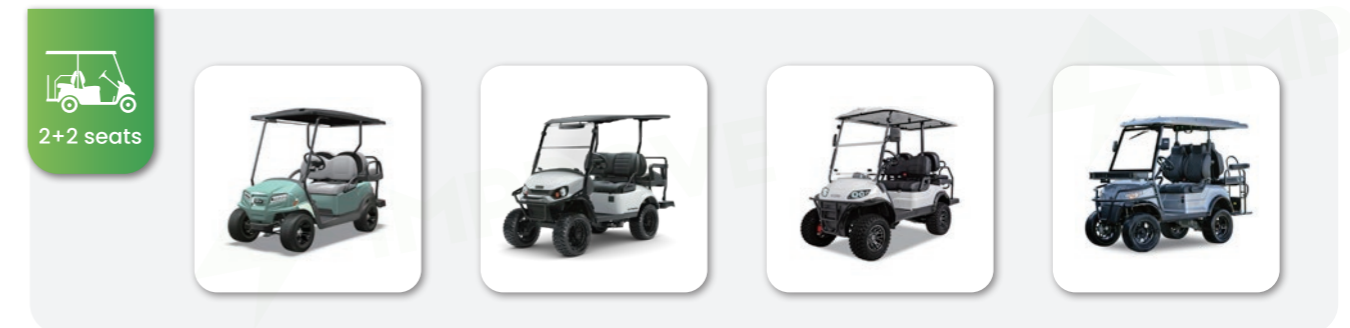
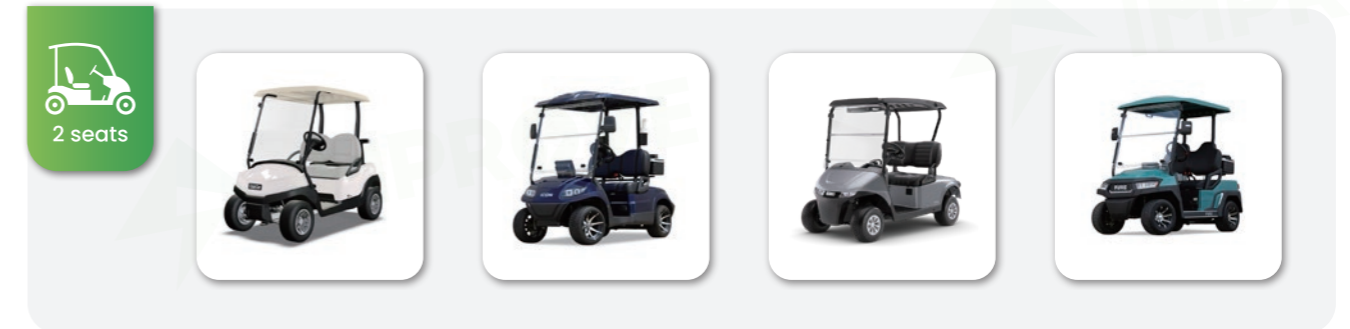


Technical Specifications



Model	Nominal Voltage	Nominal Capacity	Nominal Energy	Com Mode	Recom. Charge Current	Max. Charge Current	Max. Continuous Discharge Current	Peak Discharging Current	Dimensions	Weight	Mileage Per Full Charge	IP
IMP-GC36-105	38.4V	105Ah	4.03kWh	RS485/CAN	25A	100A	200A	400A 30s	432*334*245 mm 17.0*13.1*9.6 inch	37.3 kg 82.23 lbs	45 / 58 km 28 / 36 mi	65
IMP-GC36-150	38.4V	150Ah	5.76kWh	RS485/CAN	30A	150A	200A	400A 30s	582*334*260 mm 22.9*13.1*10.2 inch	52 kg 114.64 lbs	64 / 82 km 40 / 51 mi	65
IMP-GC36-200	38.4V	200Ah	7.68kWh	RS485/CAN	40A	200A	200A	400A 30s	510*390*255 mm 20.0*15.3*10.0 inch	63.6 kg 140.21 lbs	85 / 110 km 53 / 68mi	65
IMP-GC36-200 Pro	38.4V	200Ah	7.68kWh	RS485/CAN	40A	200A	300A	600A 30s	510*390*255 mm 20.0*15.3*10.0 inch	63.6 kg 140.21 lbs	85 / 110 Km 53 / 68mi	65

Compatible Golf Cart



48V SERIES

Choose the Best LiFePO4 Battery for 4~8 Seats Golf Carts

Meet the IMPROVE 48V Series batteries that upgrade your golfing journey, providing the hassle-free experience they increasingly demand: longer lifespan, extended range, freedom from daily maintenance, and a guaranteed lifespan of 10 years.

ZERO
Maintenance

FAST
Charge

6000⁺
Cycle Life

HIGH
Discharge Current

BLUETOOTH
5.0

EXTENDED
Range

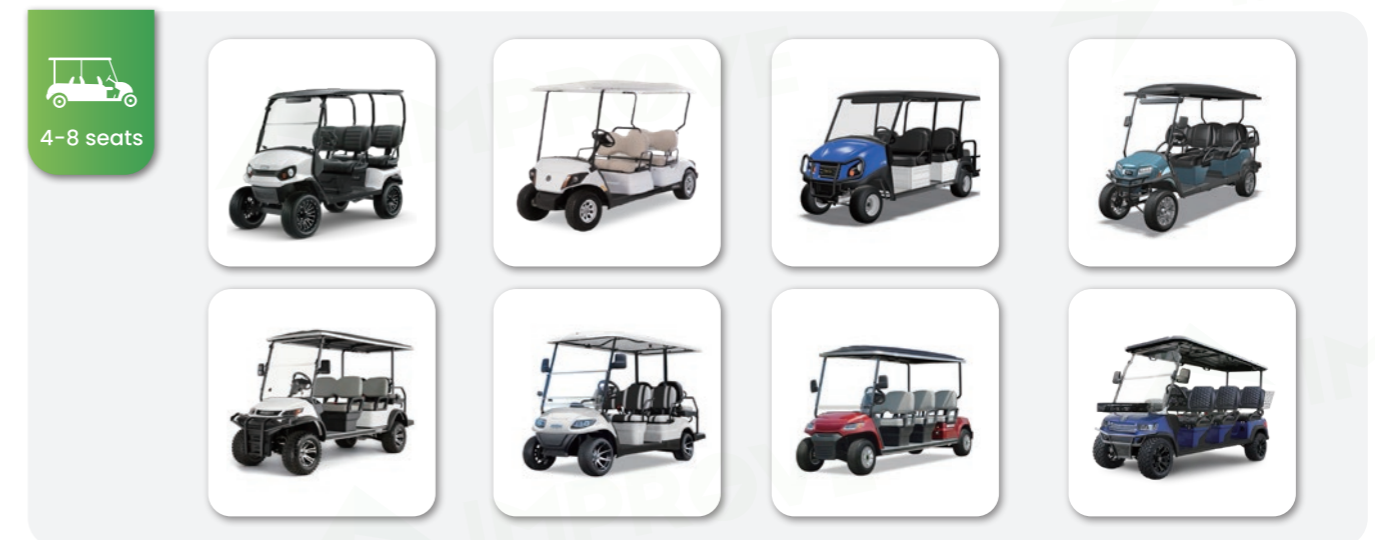


Technical Specifications



Model	Nominal Voltage	Nominal Capacity	Nominal Energy	Com Mode	Recom. Charge Current	Max. Charge Current	Max. Continuous Discharge Current	Peak Discharging Current	Dimensions	Weight	Mileage Per Full Charge	IP
IMP-GC48-72	51.2V	72Ah	3.68kWh	RS485/CAN	18A	72A	150A	300A 30s	425*320*215 mm 16.7*12.6*8.4 inch	40 kg 88.18 lbs	41 / 53 km 25 / 33 mi	65
IMP-GC48-105	51.2V	105Ah	5.37kWh	RS485/CAN	25A	100A	200A	400A 30s	509*334*245 mm 20.0*13.1*9.6 inch	46.4 kg 102.29 lbs	59 / 76 km 37 / 47 mi	65
IMP-GC48-105 mini	51.2V	105Ah	5.37kWh	RS485/CAN	25A	100A	200A	400A 30s	390*315*250 mm 15.3*12.4*9.8 inch	45 kg 99.21 lbs	59 / 76 km 37 / 47 mi	65
IMP-GC48-150	51.2V	150Ah	7.68kWh	RS485/CAN	30A	150A	200A	400A 30s	540*310*260 mm 21.2*12.2*10.2 inch	63 kg 138.89 lbs	85 / 110 km 53 / 68 mi	65
IMP-GC48-200	51.2V	200Ah	10.24kWh	RS485/CAN	40A	200A	200A	400A 30s	780*345*260 mm 30.7*13.5*10.2 inch	88 kg 194.01 lbs	114 / 146 km 71 / 91 mi	65
IMP-GC48-200 Pro	51.2V	200Ah	10.24kWh	RS485/CAN	40A	200A	300A	600A 30s	780*345*260 mm 30.7*13.5*10.2 inch	88 kg 194.01 lbs	114 / 146 km 71 / 91 mi	65
IMP-GC48-230	51.2V	230Ah	11.77kWh	RS485/CAN	40A	200A	200A	400A 30s	customized	90 kg 198.42 lbs	131 / 168 km 81 / 104 mi	65
IMP-GC48-230 Pro	51.2V	230Ah	11.77kWh	RS485/CAN	40A	200A	300A	600A 30s	customized	90 kg 198.42 lbs	131 / 168 km 81 / 104 mi	65
IMP-GC48-320	51.2V	320Ah	16.38kWh	RS485/CAN	40A	200A	200A	400A 30s	customized	125 kg 275.58 lbs	182 / 234 km 113 / 145 mi	65
IMP-GC48-320 Pro	51.2V	320Ah	16.38kWh	RS485/CAN	40A	200A	300A	600A 30s	customized	125 kg 275.58 lbs	182 / 234 km 113 / 145 mi	65

Compatible Golf Cart



72V SERIES

Choose the Best LiFePO4 Battery for 8~18 Seats Sight Seeing Shuttle

Meet the IMPROVE 72V Series batteries that upgrade your driving journey, providing the hassle-free experience they increasingly demand: longer lifespan, extended range, freedom from daily maintenance, and a guaranteed lifespan of 10 years.

ZERO
Maintenance

FAST
Charge

6000⁺
Cycle Life

HIGH
Discharge Current

BLUETOOTH
5.0

EXTENDED
Range



Technical Specifications



Model	Nominal Voltage	Nominal Capacity	Nominal Energy	Com Mode	Recom. Charge Current	Max. Charge Current	Max. Continuous Discharge Current	Peak Discharging Current	Dimensions	Weight	Mileage Per Full Charge	IP
IMP-GC72-105	73.6V	105Ah	7.72kWh	RS485/CAN	25A	100A	200A	400A 30s	550*315*250 mm 21.6*12.4*9.8 inch	64 kg 141.1 lbs	86 / 110 km 53 / 68 mi	65
IMP-GC72-150	73.6V	150Ah	11.04kWh	RS485/CAN	30A	150A	200A	400A 30s	800*330*260 mm 31.4*12.9*11.6 inch	90 kg 198.41 lbs	123 / 158 km 76 / 98 mi	65
IMP-GC72-200	73.6V	200Ah	14.72kWh	RS485/CAN	40A	200A	200A	400A 30s	680*496*260 mm 26.7*19.5*10.2 inch	113.5 kg 250.22 lbs	164 / 210 km 102 / 130 mi	65
IMP-GC72-200 Pro	73.6V	200Ah	14.72kWh	RS485/CAN	40A	200A	300A	600A 30s	680*496*260 mm 26.7*19.5*10.2 inch	113.5 kg 250.22 lbs	164 / 210 km 102 / 130 mi	65
IMP-GC72-230	73.6V	230Ah	16.92kWh	RS485/CAN	40A	200A	200A	400A 30s	1,160*320*315 mm 45.6*12.6*12.4 inch	132 kg 291.01 lbs	188 / 242 km 117 / 150 mi	65
IMP-GC72-230 Pro	73.6V	230Ah	16.92kWh	RS485/CAN	40A	200A	300A	600A 30s	1,160*320*315 mm 45.6*12.6*12.4 inch	132 kg 291.01 lbs	188 / 242 km 117 / 150 mi	65
IMP-GC72-320	73.6V	320Ah	23.55kWh	RS485/CAN	40A	200A	200A	400A 30s	customized	185 kg 407.68 lbs	262 / 337 km 163 / 209 mi	65
IMP-GC72-320 Pro	73.6V	320Ah	23.55kWh	RS485/CAN	40A	200A	300A	600A 30s	customized	185 kg 407.68 lbs	262 / 337 km 163 / 209 mi	65

Compatible Vehicle

